



Colorbond®

BEAUTIFUL STRENGTH



# The all-time favourite, versatile and reliable coated steel by BlueScope.

COLORBOND® steel is the pre-painted coated steel product developed to meet the design and performance requirements of most buildings across various segments. In short, you can count on the COLORBOND® steel to shield your building against the demanding tropical climates.

With its excellent corrosion resistance and durable paint performance, COLORBOND® steel is synonymous with consistent quality that you can rely on for any cladding application.

## 1 HIGH CORROSION RESISTANCE



COLORBOND® steel is incorporated with BlueScope's proprietary metallic coating technology – ZINCALUME® A Z150 Aluminium/Zinc alloy coated steel base substrate. It offers superior weathering performance under varied conditions.

## 2 INSPIRING, LONG LASTING COLOURS



By utilising optimum paint formulation and pigment blends, our proprietary super polyester paint system offers longer-lasting colour and better paint delamination resistance.

## 3 CLEAN TECHNOLOGY



Best defence against tropical staining, Clean Technology prevents dirt from bonding onto the surface of COLORBOND® steel and superior tropical stain resistance, hence maintaining its attractiveness for a longer period.

## 4 THERMATECH® TECHNOLOGY



Less heat, more comfort. Thermatech® Technology incorporated into COLORBOND® steel's paint system effectively lowers peak roof temperature by up to 6°C\* compared to conventional paint of the same colour.

\*Depending on level of insulation, colour, building shape and function.

## 5 WITHSTANDING THE TEST OF TIME



COLORBOND® steel has gone through extensive tests which include accelerated laboratory corrosion tests, real-world outdoor exposure tests and actual project case studies to ensure its performance meets the highest expectations in durability.

## 6 EMBEDDED BRANDING TEXT ON THE REVERSE SIDE OF STEEL SHEETS



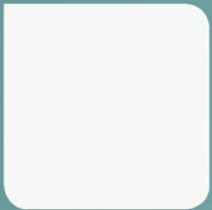
Embedded with branding text on the reverse side of every COLORBOND® steel sheet, this is BlueScope's commitment to quality and our assurance to you for product genuinity.

## 7 SERVICE SUPPORT



When you purchase COLORBOND® steel, you are buying products with services support backed by Bluescope to give you the assurance and peace of mind to select the appropriate materials for your project. We are available for consultation on projects to discuss your individual requirements to ensure a smooth progression through the various stages and for the organising of project specific orders of speciality materials if required.

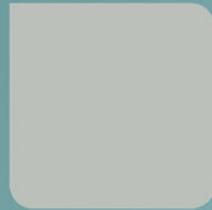
Offering you a vibrant selection to match your most prestigious designs.



African White AZ150  
Amazing White AZ200  
(SRI:82)



Off White AZ150  
Enduring White AZ200  
(SRI:80)



Shale Grey AZ150  
Ultimate Grey AZ200  
(SRI:66)



Armour Grey AZ150  
Livid Grey AZ200  
(SRI:48)



Volcanic Grey AZ150  
Ore Grey AZ200  
(SRI:28)



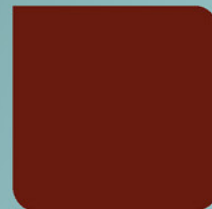
Cape Charcoal AZ150  
African Charcoal AZ200  
(SRI:20)



Cape White AZ150  
Cedarberg White AZ200  
(SRI:78)



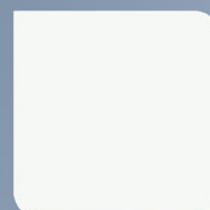
African Cream AZ150  
Durable Cream AZ200  
(SRI:71)



Heritage Red AZ150  
Enchanting Red AZ200  
(SRI:32)



Colonial Green AZ150  
Garden Route Green AZ200  
(SRI:26)



Winter MATT AZ150  
Sonata MATT AZ200  
(SRI:84)



Scallop MATT AZ150  
Oyster MATT AZ200  
(SRI:82)



Coffee MATT AZ150  
Latte MATT AZ200  
(SRI:68)



Hidden MATT AZ150  
Alley MATT AZ200  
(SRI:47)

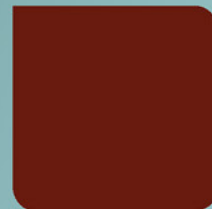


Graphite MATT AZ150  
Iron MATT AZ200  
(SRI:26)



Eclipse MATT AZ150  
Granite MATT AZ200  
(SRI:18)

**MATT (~7 Gloss Units)**



African Blue AZ150  
Two Oceans Blue AZ200  
(SRI:27)

**STANDARD GLOSS (~25 Gloss Units)**

SRI is calculated using ASTM E1980-01 with Medium Convection Coefficient (12) value reported. This data is approximate values only, may vary based on paint formulation and/or metallic coating thickness. The colours shown in the colour chart have been reproduced to represent actual product colours as accurately as possible. However, we recommend you to check your chosen colour against actual sample of the product before purchasing, as varying light conditions and limitations of the printing process may affect colour tones.

## Material Specification

### Clean COLORBOND® XRW AZ150 (designed for inland use)

0.47mm TCT or 0.53mm TCT in Clean COLORBOND® steel (Colour:TBD), metallic coating AZ150 (minimum 150g/m<sup>2</sup> coating mass). Grade G550 (minimum yield strength 550 MPa) or G300 (minimum yield strength of 300 MPa), super polyester paint system, 25µm on topside and 10µm on reverse side.

Fasteners to comply with Australian Standard AS3566.2 Class 3 or 4.

Flashing or ridge capping should be manufactured from the same material as used for the roofing.

### Clean COLORBOND® ULTRA AZ200 (designed for coastal use - heavy corrosive and industrial area)

0.48mm TCT or 0.54mm TCT in Clean COLORBOND® ULTRA steel (Colour: TBD). metallic coating AZ200 (minimum 200g/m<sup>2</sup> coating mass), Grade G550 (minimum yield strength 550 MPa) or G300 (minimum yield strength 300 MPa). super polyester paint system, 25µm on topside and 10µm on reverse side.

Fasteners to comply with Australian Standard AS3566.2 Class 4.

Flashing or ridge capping should be manufactured from the same material as used for the roofing.

### Clean COLORBOND® MATT AZ150 (designed for inland use)

0.47mm or 0.53mm TCT in Clean COLORBOND® MATT steel (Colour: TBD) with a gloss finish of 7 ± 3 units, metallic coating AZ150 (minimum 150g/m<sup>2</sup> coating mass), Grade G550 (minimum yield strength 550 MPa) or G300 (minimum yield strength of 300 MPa), super polyester paint system, 25µm on topside and 10µm on reverse side.

Fasteners to comply with Australian Standard AS3566.2 Class 3 or 4.

Flashing or ridge capping should be manufactured from the same material as used for the roofing.

### Clean COLORBOND® ULTRA MATT AZ200 (designed for coastal use - heavy corrosive and industrial area)

0.48mm or 0.54mm TCT in Clean COLORBOND® ULTRA MATT steel (Colour: TBD) with a gloss finish of 7 ± 3 units, metallic coating AZ200 (minimum 200g/m<sup>2</sup> coating mass), Grade G550 (minimum yield strength 550 MPa) or G300 (minimum yield strength of 300 MPa), super polyester paint system, 25µm on topside and 10µm on reverse side.

Fasteners to comply with Australian Standard AS3566.2 Class 4.

Flashing or ridge capping should be manufactured from the same material as used for the roofing.

For product identification and originality, please check the reverse side of the coil for the following branding text.

Clean COLORBOND® steel made by BlueScope G550 AZ150 0.53 TCT (0.48 BMT) hh: mm dd: mom: yy 11

Clean COLORBOND® MATT steel made by BlueScope G300 AZ150 0.53 TCT (0.48 BMT) hh: mm dd: mom: yy 11

Clean COLORBOND® ULTRA steel made by BlueScope G550 AZ200 0.54 TCT (0.48 BMT) hh: mm dd: mom: yy 11

Clean COLORBOND® ULTRA MATT steel made by BlueScope G300 AZ200 0.54 TCT (0.48 BMT) hh: mm dd: mom: yy 11



## Bluescope Steel Southern Africa (Pty) Ltd.

T +27 (0)21 442 5420

W [www.bluescopesteel.co.za](http://www.bluescopesteel.co.za)

The information contained in this brochure is of a general nature only, and has not been prepared with your specific needs in mind. You should always obtain specialist advice to ensure that any materials, approaches and techniques referred to in this brochure meet your specific requirements.

NS Bluescope Malaysia makes no warranty as to the accuracy, completeness or reliability of any estimates, opinions or other information contained in this brochure, and to the maximum extent permitted by law, NS Bluescope Malaysia disclaims all liability and responsibility for any loss or damage, direct or indirect, which may be suffered by any person acting in reliance on anything contained in or omitted from this document.

Clean COLORBOND® and ZINCALUME® are registered trade marks of Bluescope Steel Limited.

Bluescope is a registered trade mark of Bluescope Steel Limited.

Copyright© 2022 NS Bluescope Malaysia Sdn. Bhd. All rights reserved. No part of this brochure may be reproduced, stored in a retrieval system, or transmitted in any form or by any means, electronic, mechanical, photocopying, recording or otherwise, without the written permission of NS Bluescope Malaysia Sdn. Bhd.

This brochure supersedes all previous version.